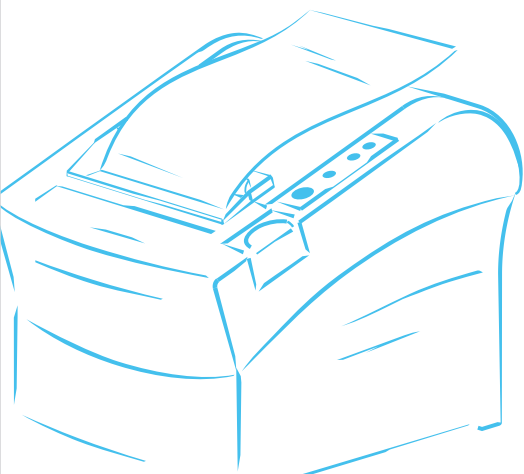


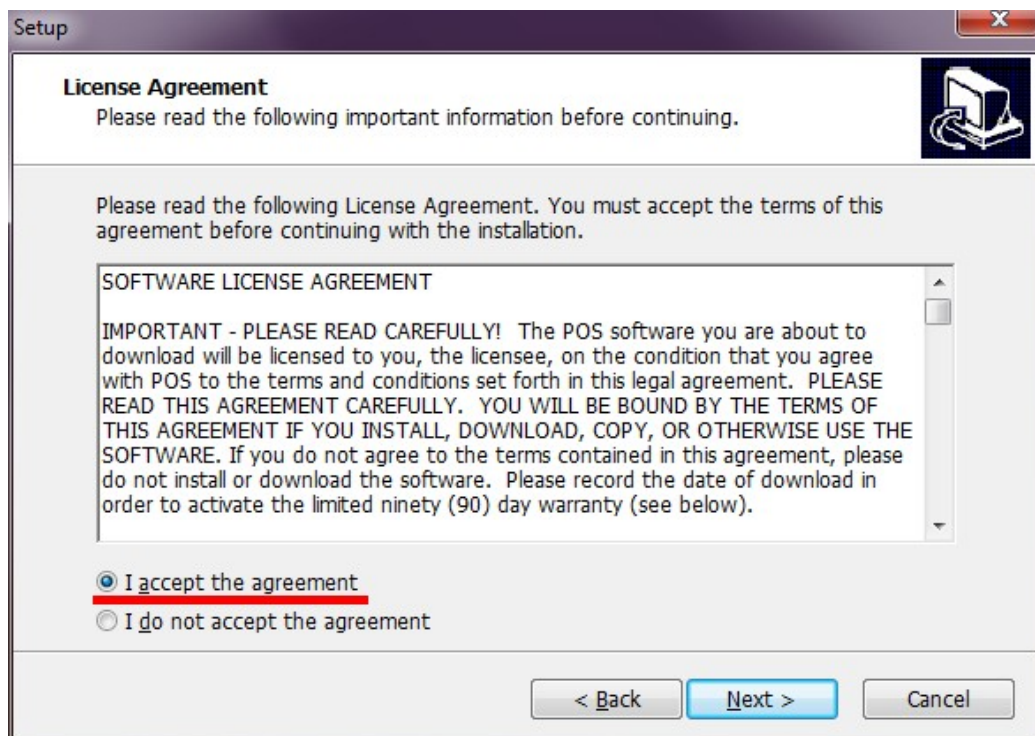
# POS Driver Install Manual



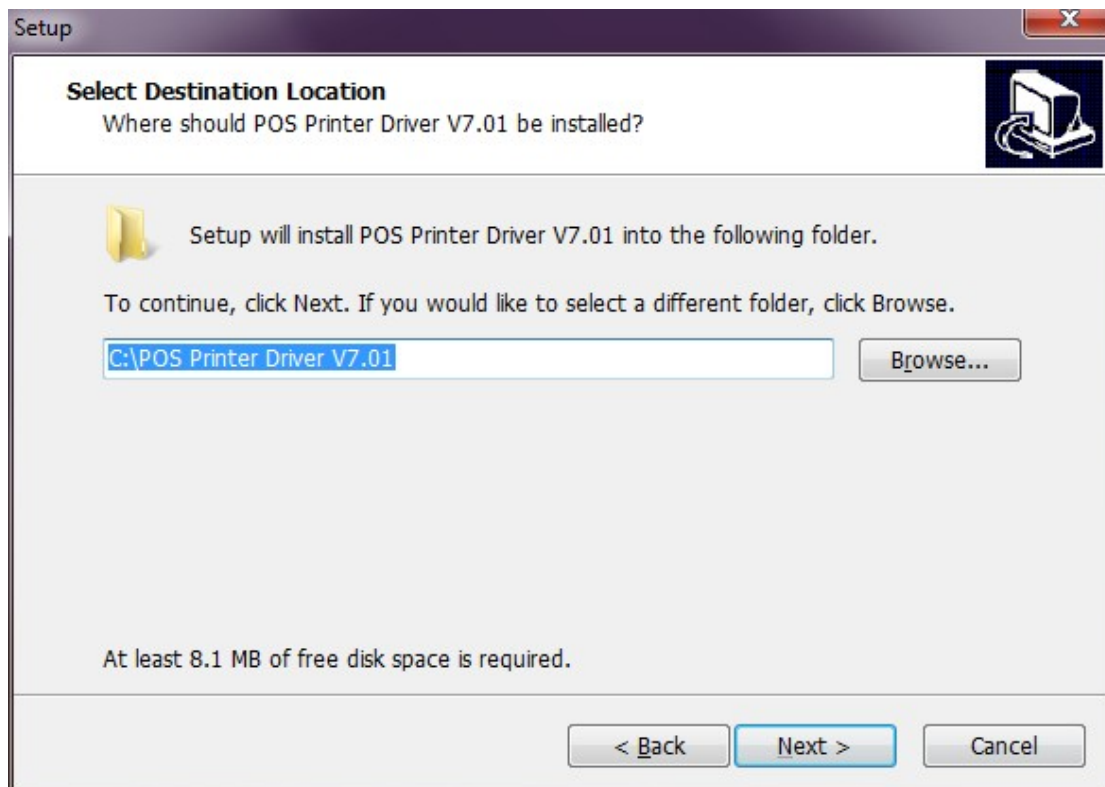
1. Find the place you store the driver, and double click the icon  to install, click “Next”:



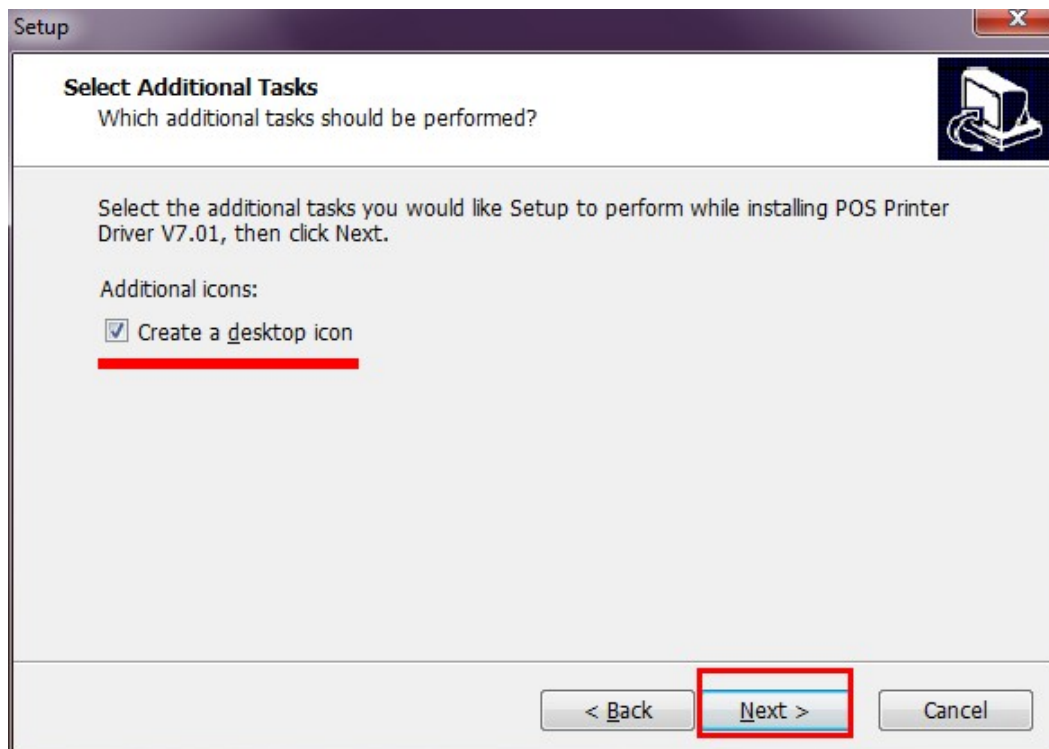
2. Choose “I accept the agreement”, click “Next”



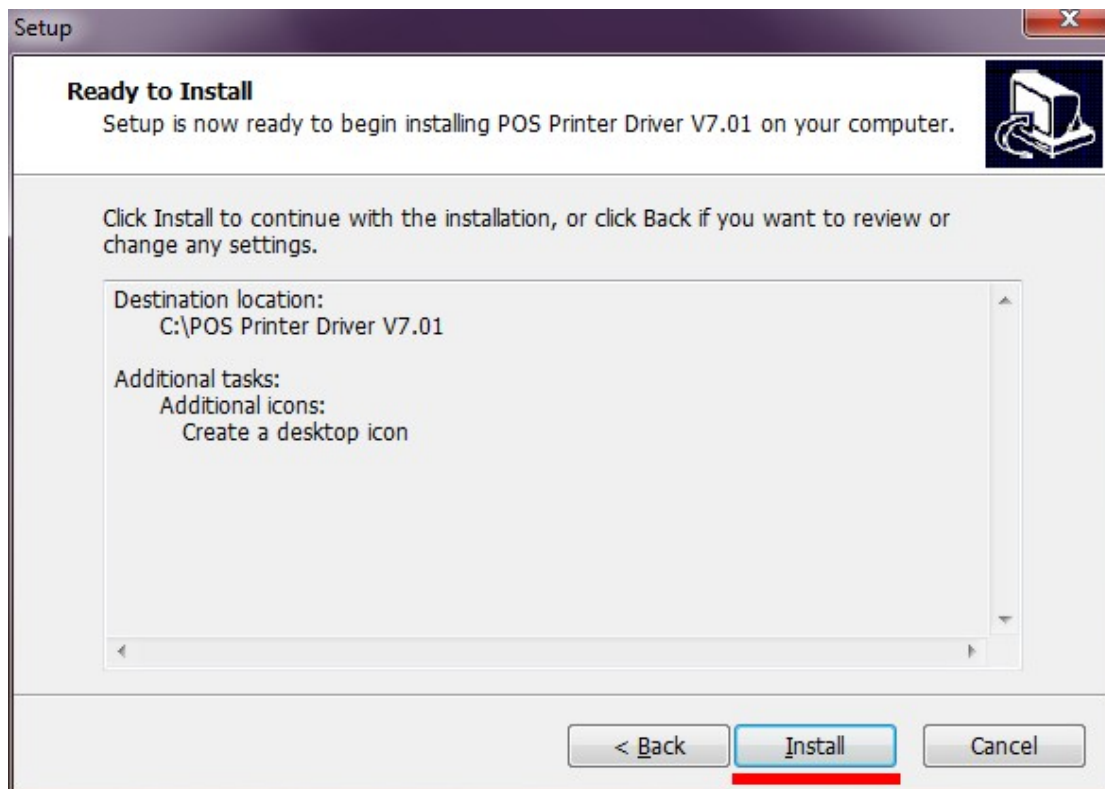
3. To choose default route, click “Next”.



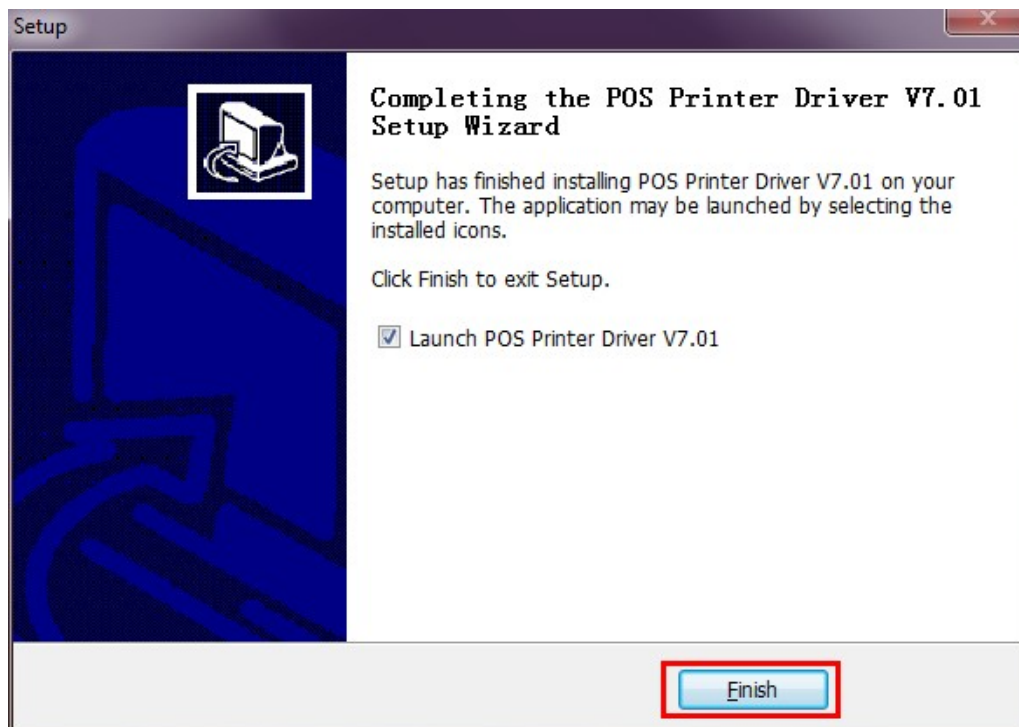
4. “Create a desktop icon” and click “Next”.



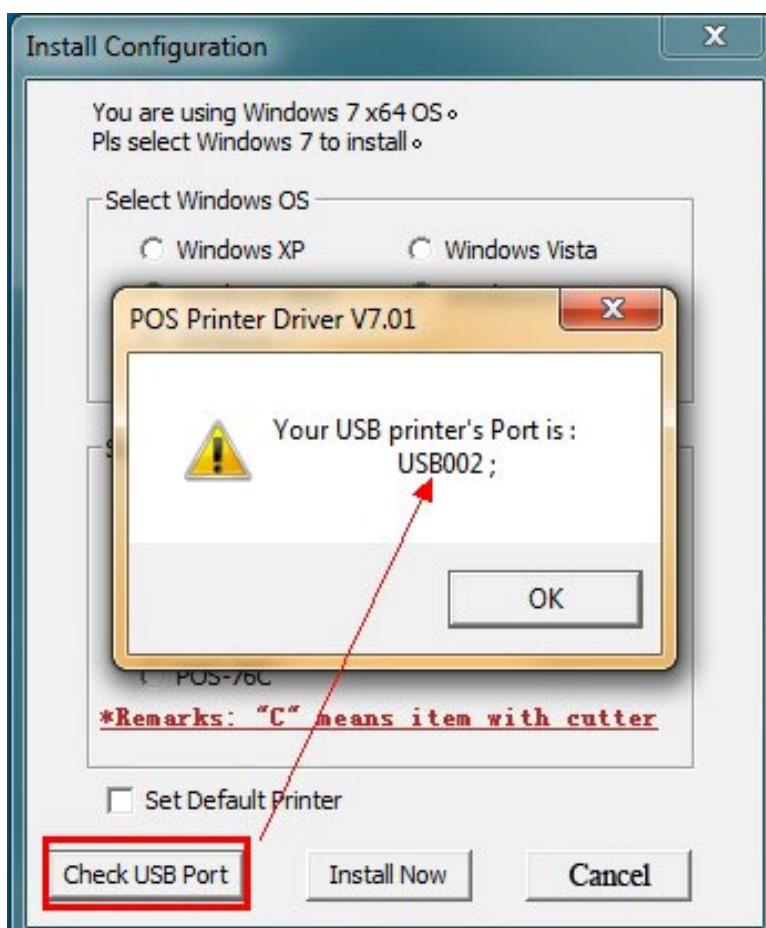
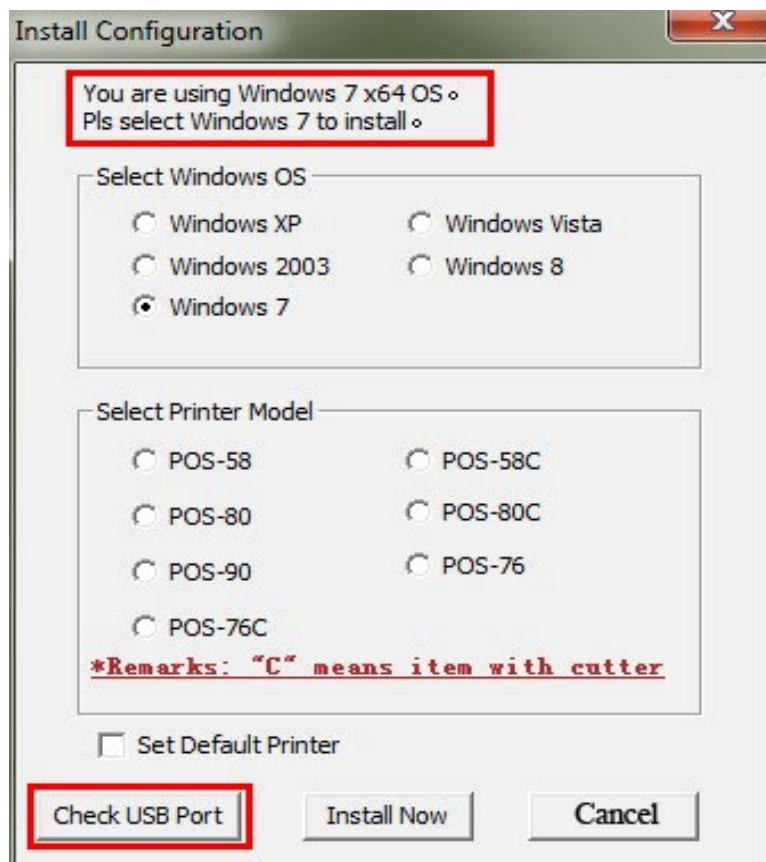
## 5. Waiting for installing



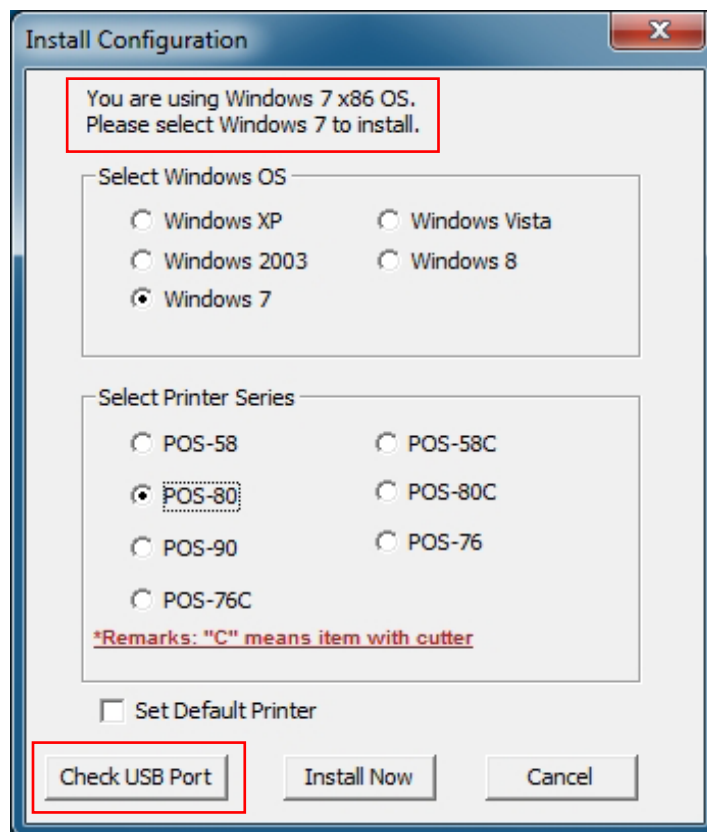
## 6. "Launch POS Driver V7.01" and click finish.



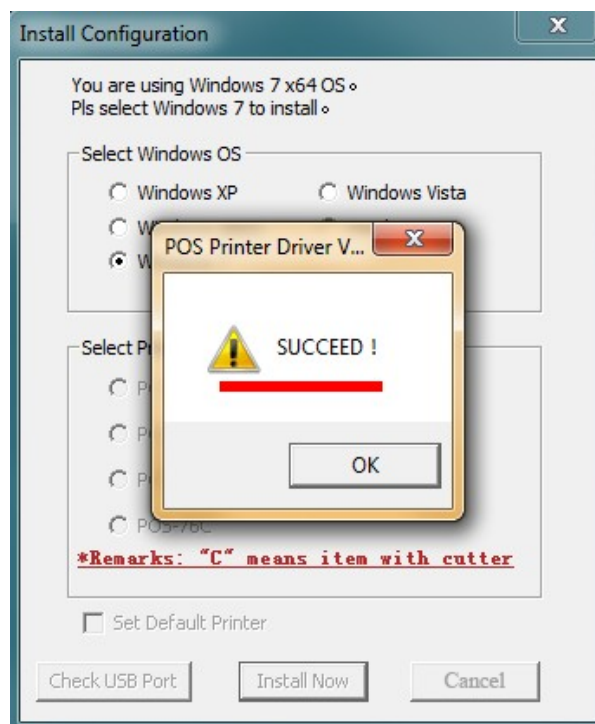
7. In condition that the printer is with USB port, click “check USB”, and software will check the USB port automatically.



**8 Choose used printer model, and click “install now”**

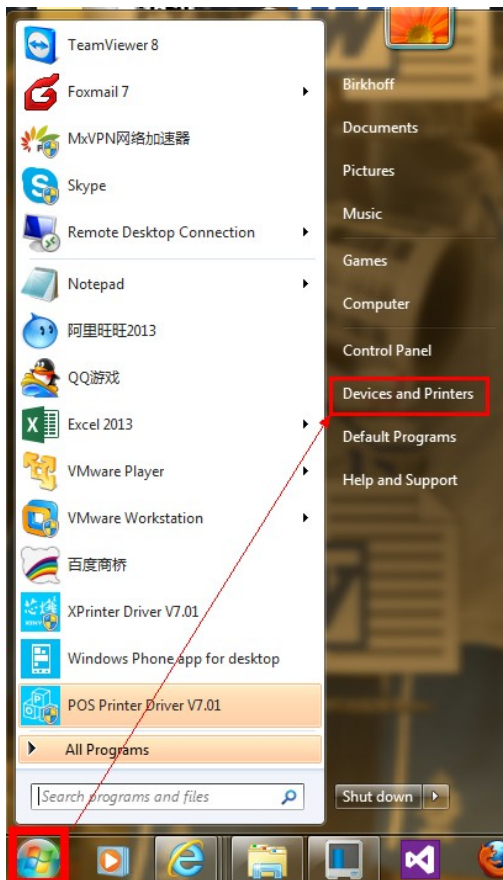


**9. Click OK**

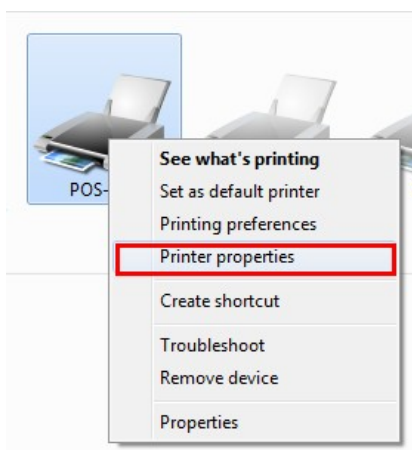




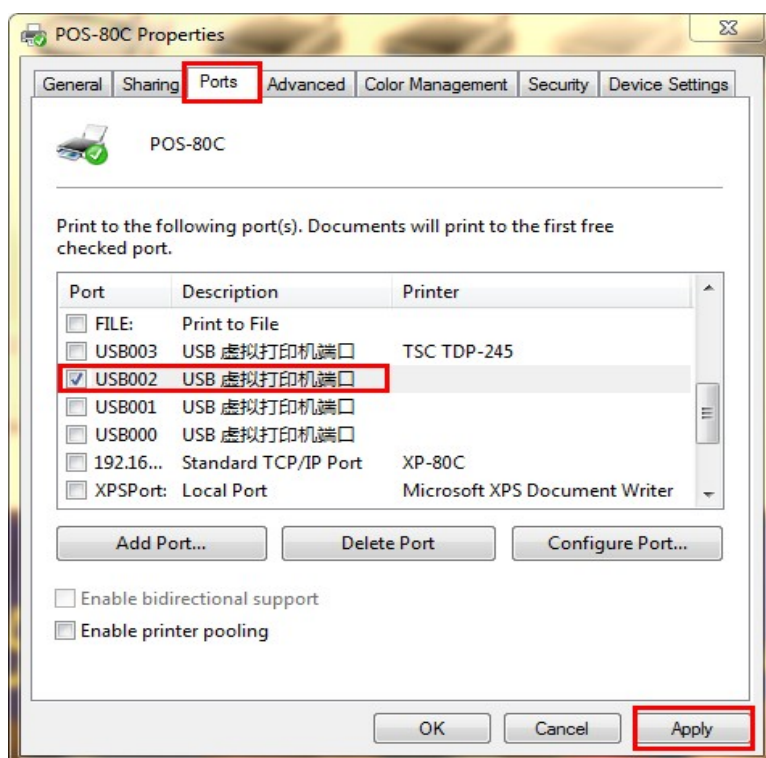
10. Find the device and printer, as shown:



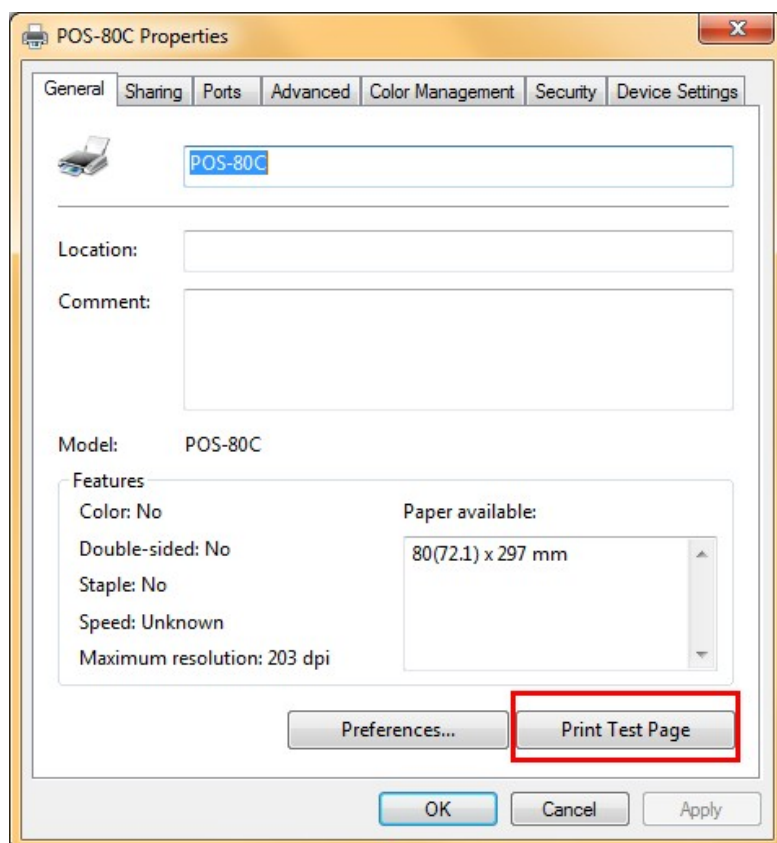
11. Find the installed driver icon, right icon --- Printer Properties, as shown below:



12. Apply the checked USB port.



13. Choose “General”, click “print test page”.





*The drive has been installed  
successfully when test page is printed.*

*Thanks for your support*